

# International Dual Master of Engineering in Construction Engineering Management <sup>1</sup>

1. Middle East and North Africa (MENA) region residency required



*New Administrative and Finance Capital (NAC) of Cairo in Egypt.*

Construction engineering management demands expertise in business, legal, and technical aspects, all within a global competitive landscape. Growing concerns about sustainability have driven the use of green design principles that conserve resources, improve energy efficiency, and promote a healthier environment. Energy consumption, rising costs, pollution, and climate change are pressing issues that demand solutions. In response, construction engineering management has emerged to address these challenges and develop sustainable construction practices for urban environments.

A dual Master of Engineering (MEng) in Construction Engineering Management degree program focusing on sustainable smart city construction practices shall be offered through a partnership between UAB, AIU, and HBRC. The degree program will provide students with a cutting-edge curriculum delivered in a hybrid learning environment (online and in-person instruction) from instructors in the USA and Egypt.

Students who successfully complete the degree program will receive dual MEng in Construction Engineering Management degrees: one from UAB, USA and one from AIU, Egypt.

Earn a Master of Engineering Degree from UAB, USA and AIU, Egypt

Complete Your Masters Degree in 19 months

**UAB**

THE UNIVERSITY OF ALABAMA AT BIRMINGHAM.  
[United States]

**AIU.**  
**ALAMEIN**  
INTERNATIONAL UNIVERSITY  
جامعة العلمين الدولية

[New Alamein City, Egypt]



[Cairo, Egypt]



*Students Visiting a NAC Building under Construction in Cairo.*

## CONSTRUCTION ENGINEERING MANAGEMENT

UAB and AIU are offering a unique opportunity to earn dual Master of Engineering (MEng) in Construction Engineering Management degrees to qualified working professionals who have completed an accredited bachelor degree in engineering or a close science-related field from a College or University.

- Increase your earning and promotion potential with dual MEng in Construction Engineering Management degrees.
- The 33 credit hour degree can be completed in 1 to 2 academic years.
- This degree is a great alternative to an MBA for working professionals in construction and/or engineering careers.
- This is a multi-discipline graduate program.
- Designed for individuals who want to interact with peers using state-of-the-art instructional methods.
- Learn from both USA and Egyptian instructors with years of industry experience.

**Earn Your Degree in 19 Months!**

## WHO SHOULD APPLY?

- Bachelor of engineering (or a close science-related field) degree holders working for engineering and construction companies seeking careers in construction engineering management.
- Engineers and architects seeking advanced project management and business skills.
- Construction superintendents, project managers, cost estimators, and schedulers overseeing small and large projects.
- General contractors and subcontractors.
- Manufacturing and material suppliers.
- Utility company and public works managers.
- Women interested in capitalizing on the current industry demand to bridge the gender gap in the construction workforce.



*Student Participating in an Online Course.*

## TUITION & FEES FOR DUAL MEng DEGREES [2 courses per semester is typical]

**Total Est. Cost = \$2,800 USD per semester x 5 semesters = \$14,000 USD<sup>1, 2, 3</sup>**

1. Middle East and North Africa (MENA) region residency required.

2. For non-residents of Egypt, the total program cost is \$16,500. UAB is providing Egyptian students with a \$2,500 USD scholarship [\$500 per course taken at UAB].

3. UAB and AIU tuition and fees are subject to change.

## ADMISSION REQUIREMENTS

- Bachelor degree from an accredited University in engineering or a closely-related field.
- An undergraduate GPA or 3.0 or higher (*individuals not meeting GPA requirement but who have a strong professional background and references may be admitted*).
- No GRE required.
- International students must submit English proficiency scores (i.e., TOEFL, IELTS, PTEA, IELA, or Duolingo scores) in accordance with UAB Graduate School requirements.
- Original transcripts sent directly to both UAB and AIU for degree-seeking students (*detailed instructions are provided during the online application process*).
- Two years of relevant work experience
- Personal essay written by the student detailing their interest in the field of construction engineering management focusing on sustainable construction practices for building sustainable smart cities.
- Three letters of recommendation from professional references.
- Resume/Curriculum Vitae.

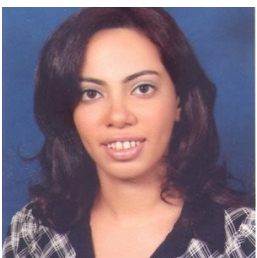
For more information, please contact:



**Prof. Wesley C. Zech, PhD**  
 Director, CEM  
 Univ. of Alabama at Birmingham  
 Email: [zechwes@uab.edu](mailto:zechwes@uab.edu)  
 Office: +1 (205) 934-1965  
 Fax: +1 (205) 934-9855



**Prof. Remon Eskander, PhD**  
 Professor of CEM  
 Engineering Programs Director  
 Alamein International University  
 Tel: +20 12 23813937  
 Email: [reskander@aiu.edu.eg](mailto:reskander@aiu.edu.eg)



**Assoc. Prof. Ireny Beshara, PhD**  
 Head of Constr. & Project Mgmt.  
 Housing & Building National  
 Research Center  
 Tel: +20 2 01005635865  
 Email: [ireny.beshara@hbrc.edu.eg](mailto:ireny.beshara@hbrc.edu.eg)

## MEng in CEM CURRICULUM

| Course No.                          | Title                                        | Hrs.      |
|-------------------------------------|----------------------------------------------|-----------|
| CECM 669                            | Advanced Project Management                  | 3         |
| CECM 670                            | Construction Estimating & Bidding            | 3         |
| CECM 671                            | Construction Liability & Contracts           | 3         |
| CECM 672                            | Construction Methods & Equipment             | 3         |
| CECM 673                            | Tech. of Project Planning & Control          | 3         |
| CECM 674                            | Overview of Green Building Design & Constr.  | 3         |
| CECM 675                            | Adv. Construction & Engineering Economics    | 3         |
| CECM 676                            | Construction Project Risk Management         | 3         |
| CECM 688                            | Const. Mgmt. & Lead. Chal. in the Glob. Env. | 3         |
| CECM 689                            | Building Information Modeling Techniques     | 3         |
| <b>Total (to earn UAB degree) =</b> |                                              | <b>30</b> |
| AIU Course                          | Capstone Project <sup>1</sup>                | 3         |
| <b>Total (to earn AIU degree) =</b> |                                              | <b>33</b> |

Note: 1. To earn an AIU degree, students will need to complete a 3 credit hour capstone project for a total of 33 credit hours.



Completed Buildings in NAC of Cairo in Egypt.

## DEADLINES FOR APPLICATIONS

**FALL** | **SPRING** | **SUMMER**  
 August 1<sup>st</sup> | December 1<sup>st</sup> | April 1<sup>st</sup>

**APPLY NOW!**

**University of Alabama at Birmingham**

Dept. of Civil, Construction, & Env.  
Engineering

1075 13th Street South  
Birmingham, AL 35205, USA

<https://www.uab.edu/engineering/civil/cem-dual-degree>

**Alamein International University**

Field of Engineering  
New Al-Alamein City, Matrouh, Egypt

<https://aiu.edu.eg/construction-engineering-management-degree-program/>

**Housing & Building National Research Center**

EI-Tahrir Street  
Dokki, Giza 11511  
P.O. Box 1770, Cairo, Egypt

<https://www.hbrc.edu.eg/en/>



**UAB**  
THE UNIVERSITY OF  
ALABAMA AT BIRMINGHAM.

**AIU.**  
**ALAMEIN**  
INTERNATIONAL UNIVERSITY  
جامعة العلمين الدولية

